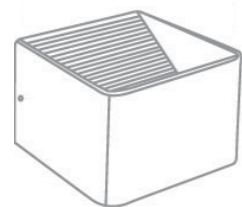


# Wall Mounted Light



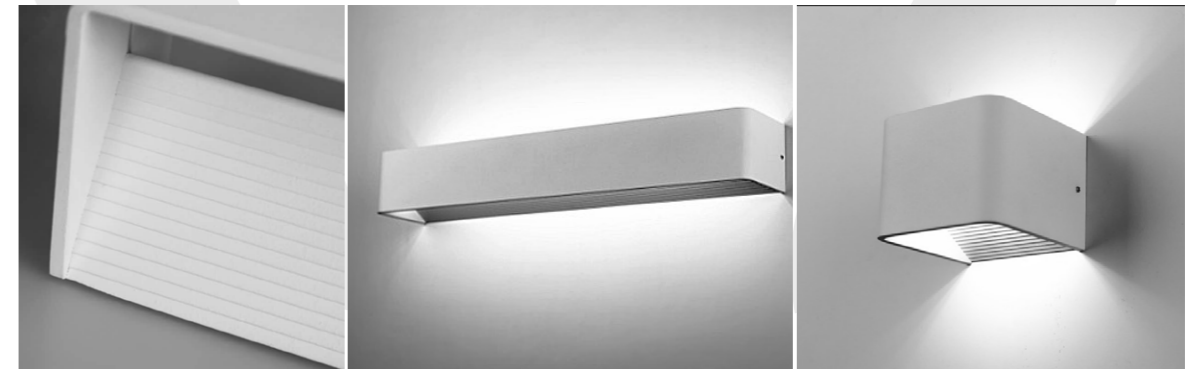
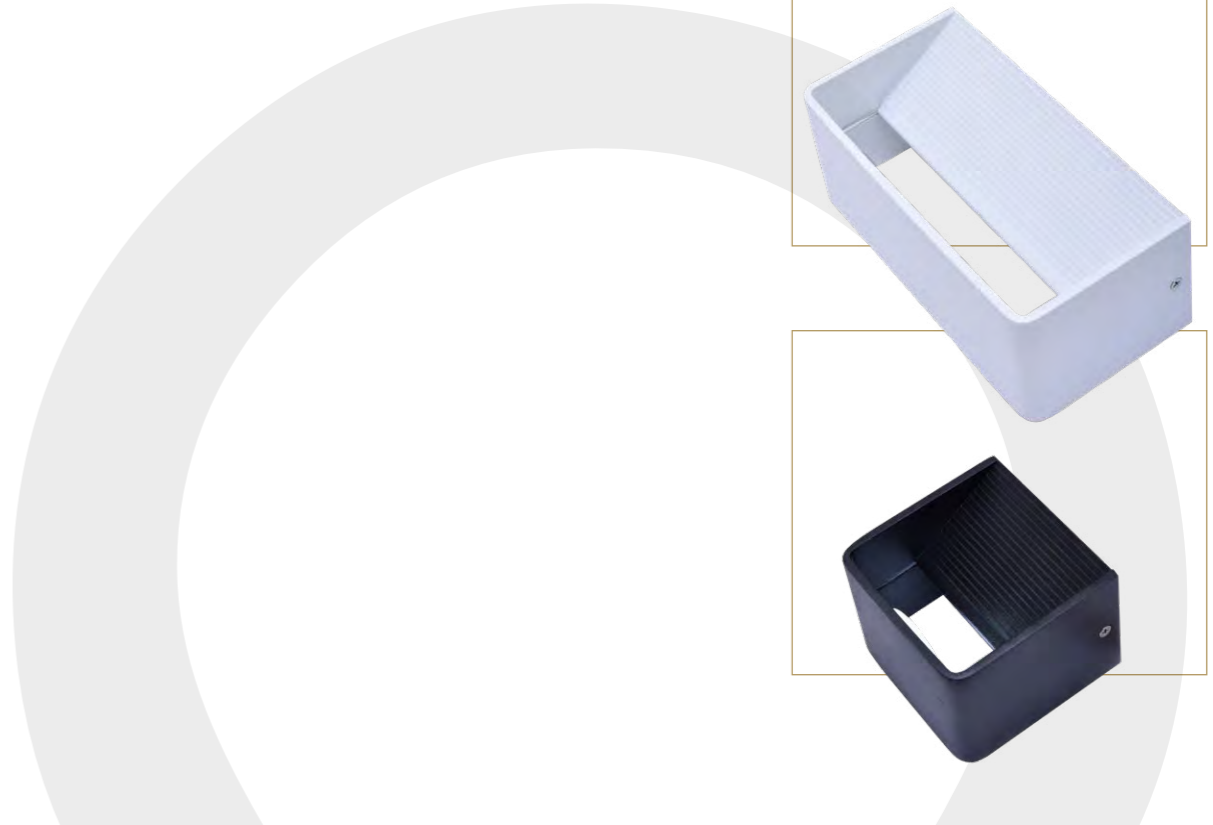


DORSA



IP22 | 80 CRI | CE

- Interior LED surface mounted wall light
- Modern Interior Up Down Wall Wash Lights
- 2 year warranty
- constant current LED driver included
- Nice and Bright Light



	Order No.	Power (W)	Lumen	Beam Angle(°)	SIZE(mm)
LEDA	NWLD1005	5	380	100	100 x 100 x 80
	NWLD2010	10	760	100	200 x 100 x 80
	NWLD3050	15	1140	100	300 x 100 x 80

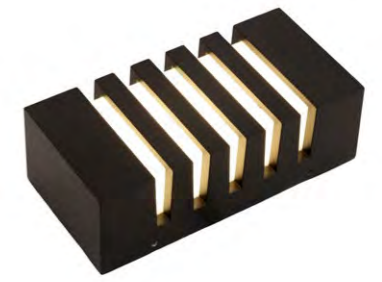
Protection Class	Color Temperature(°K)	Body Coating	Body Material
★ Class I	Warm-Cool	Electrostatic Powder Coating	Die Cast Aluminum



# DERISA



# ANTIQUE



IP22 | 80 CRI | CE

- Interior LED surface mounted wall light
- Modern Interior Up Down Wall Wash Lights
- 2 year warranty
- constant current LED driver included
- Nice and Bright Light



	Order No.	Power (W)	Lumen	Beam Angle(°)	SIZE(mm)
AFROUZ	NWLD1506	6	570	100	153 x 100 x 53
	NWLD2712	12	1140	100	273 x 100 x 53
	NWLD3918	18	1710	100	393 x 100 x 53
	NWLD5224	24	2280	100	523 x 100 x 53

Protection Class: ★ Class I | Color Temperature(°K): Warm-Cool | Body Coating: Electrostatic Powder Coating | Body Material: Die Cast Aluminum

IP54 | 80 CRI | CE

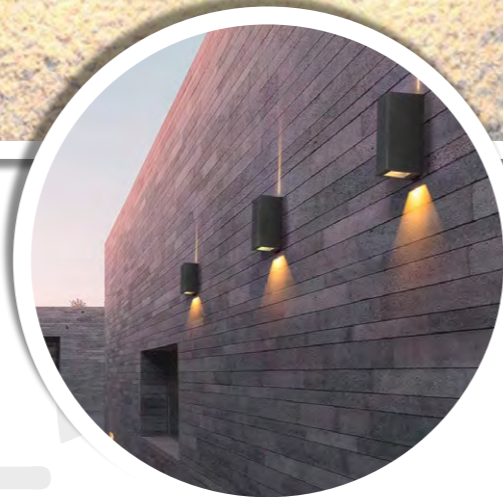
- Stylish & Excellent light
- Modern architectural design
- Die-cast metal body
- LED Module Life Time (h) 50000 Hrs
- Up light or Down light Mounted

	Order No.	Power (W)	Lumen	Beam Angle(°)	SIZE(mm)
ANTIQUE	NWLA2412	12	1200	120	245 x 120 x 80

Protection Class: ★ Class II | Color Temperature(°K): Warm-Cool | Body Coating: Electrostatic Powder Coating | Body Material: Die Cast Aluminum



# JASPER



IP54 | 80 CRI | CE

- Stylish & Excellent light
- Modern architectural design
- Die-cast metal body
- LED Module Life Time (h) 50000 Hrs
- Up light or Down light Mounted

	Order No.	Power	Lumen	Beam Angle(°)	SIZE(mm)
<b>JASPER</b>	<b>NWLJ1502</b>	2 x 1	240	10   70	150 x 50 x 78

Protection Class: ★ Class I | Color Temperature(°K): Warm | Body Coating: Electrostatic Powder Coating | Body Material: Die Cast Aluminum

# APOLON

# AROWANA

IP54 | 80 CRI | CE

- Stylish & Excellent light
- Modern architectural design
- Die-cast metal body
- LED Module Life Time (h) 50000 Hrs
- Up light or Down light Mounted

	Order No.	Power	Lumen	Beam Angle(°)	SIZE(mm)
<b>APOLON</b>	<b>NWLA1403</b>	3	300	120	148 x 148 x 35
<b>AROWANA</b>	<b>NWLA2006</b>	6	300	120	Ø200 x H90

Protection Class: ★ Class I | Color Temperature(°K): Warm | Body Coating: Electrostatic Powder Coating | Body Material: Die Cast Aluminum





# PLUTON



IP54 | 80 CRI | CE

- Stylish & Excellent light
- Modern architectural design
- Die-cast metal body
- LED Module Life Time (h) 50000 Hrs
- Up light or Down light Mounted

Order No.	Power	Lumen	Beam Angle(°)	SIZE(mm)
<b>NWLP2014</b>	14	1680	120	200 x 160 x 60

Protection Class	Color Temperature(°K)	Body Coating	Body Material
★ ClassII	Warm	Electrostatic Powder Coating	Die Cast Aluminum

# DION



IP54 | 80 CRI | CE

- Stylish & Excellent light
- Modern architectural design
- Die-cast metal body
- LED Module Life Time (h) 50000 Hrs
- Up light or Down light Mounted

Order No.	Power	Lumen	Beam Angle(°)	SIZE(mm)
<b>NWLD9002</b>	2	120	120	90 x 90 x 40

Protection Class	Color Temperature(°K)	Body Coating	Body Material
★ ClassI	Warm	Electrostatic Powder Coating	Die Cast Aluminum

# MARS

## METIS



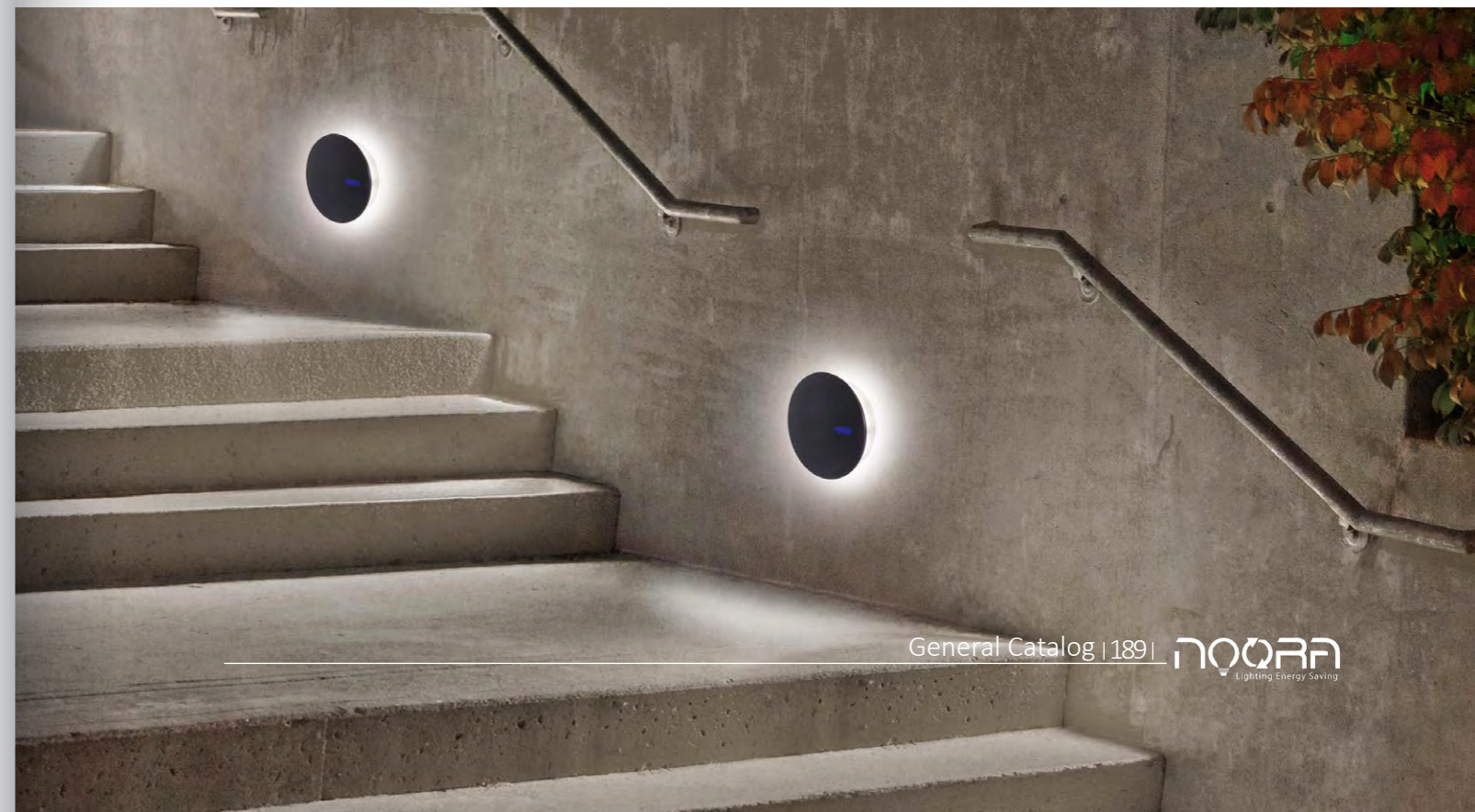
IP54 | 80 CRI | CE

- Stylish & Excellent light
- Modern architectural design
- Die-cast metal body
- LED Module Life Time (h) 50000 Hrs
- Up light or Down light Mounted

Order No.	Power	Lumen	Beam Angle(°)	SIZE(mm)
<b>NWRM1507</b>	7	700	120	Ø150 x H50
<b>NWSM1507</b>	7	700	120	150 x 150 x 50

Protection Class	Color Temperature(°K)	Body Coating	Body Material
★ ClassI	Warm	Electrostatic Powder Coating	Die Cast Aluminum





# HERMES



IP54 | 80 CRI | CE

- Stylish & Excellent light
- Modern architectural design
- Die-cast metal body
- LED Module Life Time (h) 50000 Hrs
- Up light or Down light Mounted



	Order No.	Power	Lumen	Beam Angle(°)	SIZE(mm)
<b>HERMES</b>	<b>NWLH2412</b>	12	900	60	245 x 110 x 95

Protection Class	Color Temperature(°K)	Body Coating	Body Material
★ Class I	Warm	Electrostatic Powder Coating	Die Cast Aluminum

# JUPITER

IP65 | 80 CRI | CE

- Stylish & Excellent light
- Modern architectural design
- Die-cast metal body
- LED Module Life Time (h) 50000 Hrs
- Up light or Down light Mounted



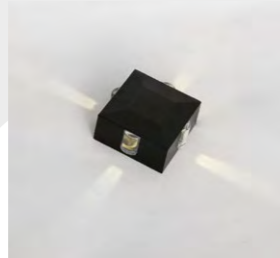
	Order No.	Power	Lumen	Beam Angle(°)	SIZE(mm)
<b>JUPITER</b>	<b>NWLJ1006</b>	3 x 2	460	Adjustable	100 x 100 x 100

Protection Class	Color Temperature(°K)	Body Coating	Body Material
★ Class I	Warm	Electrostatic Powder Coating	Die Cast Aluminum





## AMETRINE



IP54 | 80 CRI | CE

- Stylish & Excellent light
- Modern architectural design
- Die-cast metal body
- LED Module Life Time (h) 50000 Hrs
- Up light or Down light Mounted

	Order No.	Power	Lumen	Beam Angle(°)	SIZE(mm)
AMETRINE	NWLA1204	4	320	10	124 x 124 x 60

Protection Class  
★ Class I

Color Temperature(°K)  
Warm

Body Coating  
Electrostatic Powder Coating

Body Material  
Die Cast Aluminum

## PLAZZA



IP54 | 80 CRI | CE

- Stylish & Excellent light
- Modern architectural design
- Die-cast metal body
- LED Module Life Time (h) 50000 Hrs
- Up light or Down light Mounted

	Order No.	Power	Lumen	Beam Angle(°)	SIZE(mm)
PLAZZA	NWLP1204	4	320	5	124 x 124 x 45

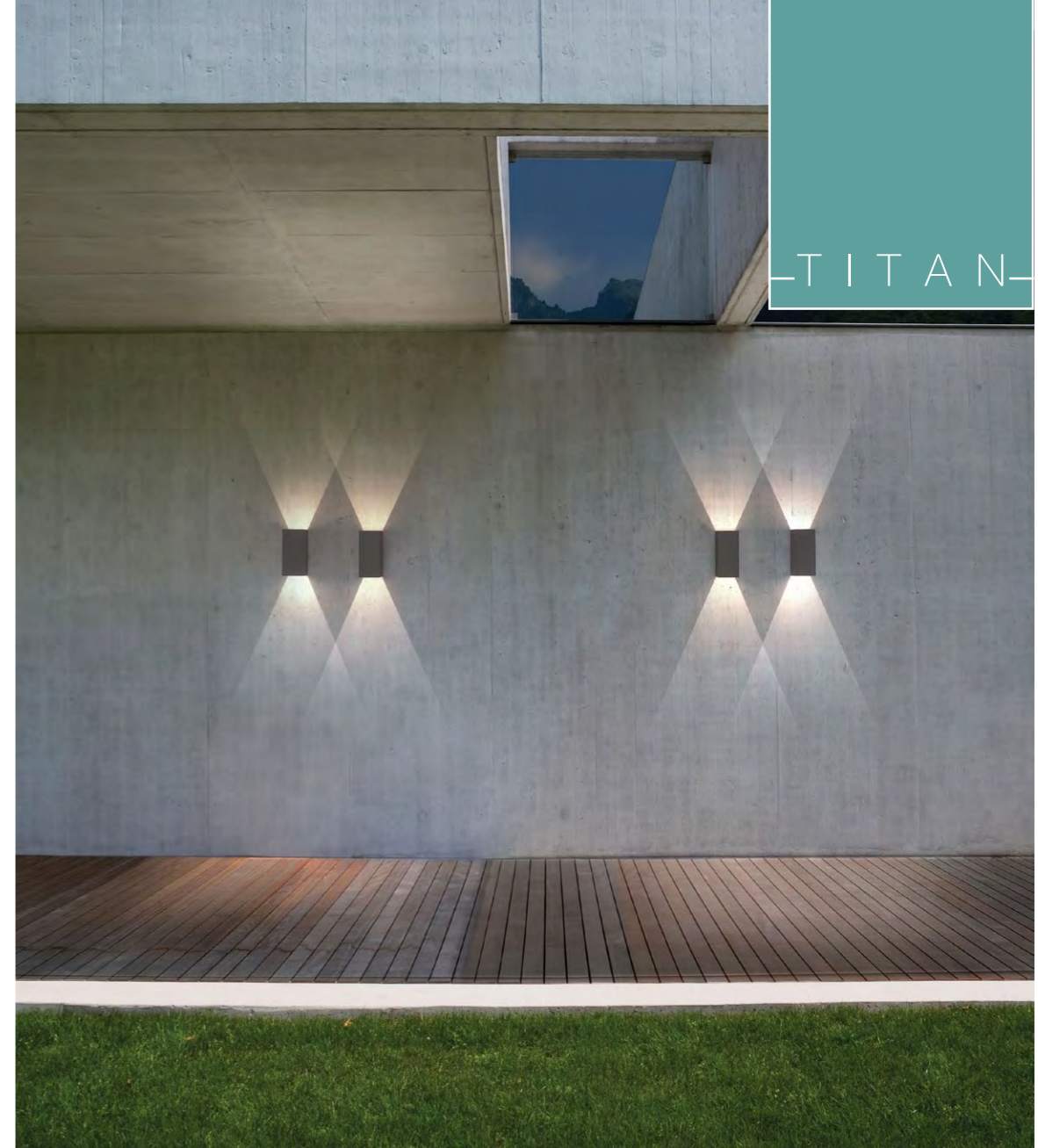
Protection Class  
★ Class I

Color Temperature(°K)  
Warm

Body Coating  
Electrostatic Powder Coating

Body Material  
Die Cast Aluminum

## TITAN



IP54 | 80 CRI | CE

- Stylish & Excellent light
- Modern architectural design
- Die-cast metal body
- LED Module Life Time (h) 50000 Hrs
- Up light or Down light Mounted

	Order No.	Power	Lumen	Beam Angle(°)	SIZE(mm)
TITAN	NWLT1606	2 x 3	540	120	160 x 90 x 65

Protection Class  
★ Class I

Color Temperature(°K)  
Warm

Body Coating  
Electrostatic Powder Coating

Body Material  
Die Cast Aluminum